


Artisan Loom

Producttype	Kamerbreed	
Collectie	Design Journey	
Stijlnummer	5A208	
Uitzicht	Multi-Level Patroon/Cut Loop	
Vezel	Ecosolution Q® Nylon	
Primaire Backing	Synthetisch	
Secundaire Backing	Ultraloc®	
Beschermende Behandelingen	SSP® Shaw Grondbescherming	
Aanbevolen Kleefstof	H1000, H1200 or H3800	
	u.s.	metric
Productformaat	12 ft	3.66 m
Meter	1/10 in	39.4 per 10 cm
Steken	9.5 per in	38.0 per 10 cm
Gemiddelde Dichtheid	9060 oz/yd³	0.335 g/cm³
Kilotex		9.04
Totale Dikte	0.335 in	8.51 mm
Getuft Gewicht	38 oz/yd²	1288.4 g/m²
Installatiepatroon Herhalen	48 in x 36 in	121.92 cm x 91.44 cm



Aanbevolen Installatiemethode

Direct Glue, Double Glue, Stretch-In

Gegevens + Testen

Pooltest	Pass
Stralingspaneel (Astm E648)	Class I
Nbs-rook	Less Than 450
Elektrostatische Weerstand	Less Than 3.5 kv
Cri Groen Label Plus (Glp)	GLP2271
Ada Compliance	>0.6, Voldoet aan de aanbevolen statische wrijvingscoëfficiënt voor ADA-loopvlakken en toegankelijke routes***

Test Reports may be included or listed by the manufacturing/inventory style number as opposed to the noted selling style number.

Garanties

Levenslang Commercieel Beperkt

Coördinerende Producten

Carpet Tile: **Artisan Tile, Plain Weave Tile, Chok Tile**

Broadloom: **Chok Loom**

Kenmerken + Certificeringen

Cradle to Cradle gecertificeerd™

Environmental Product Declaration (EPD)

nsf 140

CRI Green Label Plus (GLP)

CE-markering (EN 14041)

milieugarantie

totaal gerecycleerde inhoud

productverpakking

land van herkomst

Zilver Niveau (Versie 3.1)

3de Partij Gecertificeerd in Overeenstemming Met ISO14044, ISO14025 & EN15804

Goud

GLP2271

3de Partij Gecertificeerd

Re[turn] Reclamation Program* | Pickup & Delivery Available

<1% (Pre-Consumer <1% | Post-Consumer 0%)

100% Recycleerbaar

Verenigde Staten

Groen Leed Bijdragekrediet

"MR-krediet: openbaarmaking en optimalisering van bouwproducten

Milieuproductverklaringen - Optie 1: Milieuproductverklaring (EPD)"

"MR-krediet: Openbaarmaking en optimalisering van bouwproducten

Materiaalingrediënten - Optie 1: Rapportage materiaalingrediënten"

"MR-krediet: openbaarmaking en optimalisering van bouwproducten

Materiaalingrediënten - Optie 2: Optimalisering van materiaalingrediënten"

"EQ-krediet: materialen met lage emissie Optie 1: Berekeningen per

productcategorie"

3rd Party Certified in Accordance with ISO14044, ISO14025 & EN15804

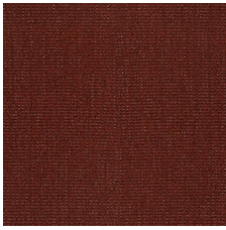
C2C Silver Level (Version 3.1)

C2C Silver Level (Version 3.1)

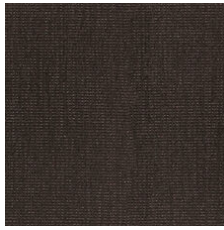
Green Label Plus Certification: GLP2271

Available Colorways





Annato 96880



Sanskrit 96906

Aanvullende Informatie

* To learn more about the recyclability of our products and our Environmental Guarantee, please visit shawcontract.com/sustainability.

**Meets or exceeds all local and national regulations in country of manufacture. (Manufactured in an ISO 9001 & ISO 14001 certified facility or equivalent)

***This carpet is manufactured to be ADA compliant, but to be fully ADA compliant, the end-user must ensure the carpet is adhered to the floor and installed as outlined in the ADA standards.

[Installation Guidelines](#)

[Maintenance Guidelines](#)

Specifications are subject to nominal manufacturing variance. Material supply and/or manufacturing processes may necessitate changes without notice.

This product is an exclusive design and may not be duplicated in any manner. Use of this design in the creation of another product design is also strictly prohibited.

Visit shawcontract.com/testing for more information.



PVC-Free

Corporate Headquarters +1 800 257 7429 | +1 706 532 7984 | Atlanta +1 404 853 7429 | Bengaluru +91 80 6773 0202 | Beijing +86 10 6568 588 | Chicago +1 312 467 1331 | Dubai +971 4 584 6956 | Hong Kong +852 2623 0371 | Latin America (Miami) +1 305 827 5912 | London +44 207 961 4120 | Los Angeles +1 800 233 1614 | Melbourne +61 3 9939 8543 | Mexico City +55 5010 7600 | Mumbai +91 22 6284 5050 | Nantong +86 400 800 7429 | New York +1 212 953 7429 | Paris +33 (0) 1 81 22 44 39 | San Francisco +1 415 955 1920 | Santiago +562 2431 5000 x 550 | São Paulo +55 11 3071 1702 | Shanghai +86 21 3338 4000 | Singapore +65 6733 1811 | Sydney +1 800 556 302